

Cold Chain Logistical Services

Full Visibility for Perishable Export Shipments

Understand the real impact of time and temperature

Good temperature management throughout the supply chain is critical to ensuring the quality of perishables. It becomes obvious when well done—high quality, positive brand recognition, increased profits—yet much more difficult to accomplish in complex supply chains like exports. As a supplier, the process of managing the cold chain becomes challenging once a commodity leaves your packinghouse—transportation by truck, rail, or vessel can result in loss of quality based on both time and temperature.

Sensitech combines electronic monitoring with data management and statistical analysis to effectively and efficiently manage your cold chain, giving you the information necessary to anticipate issues that may arise. Once identified, corrective action can be taken proactively rather than waiting for the more expensive reactive actions.

Program Advantages

- Gain full visibility throughout the export supply chain—farm, packinghouse, shipping port, destination port—including staging, loading and storage
- Understand the impact of time and temperature on quality and shelf-life
- Evaluate carriers and ensure SOP compliance
- Make educated operational-level decisions at receiving
- Identify trends and patterns in cold chain performance
- Prioritize corrective action to ensure maximum impact on performance improvement

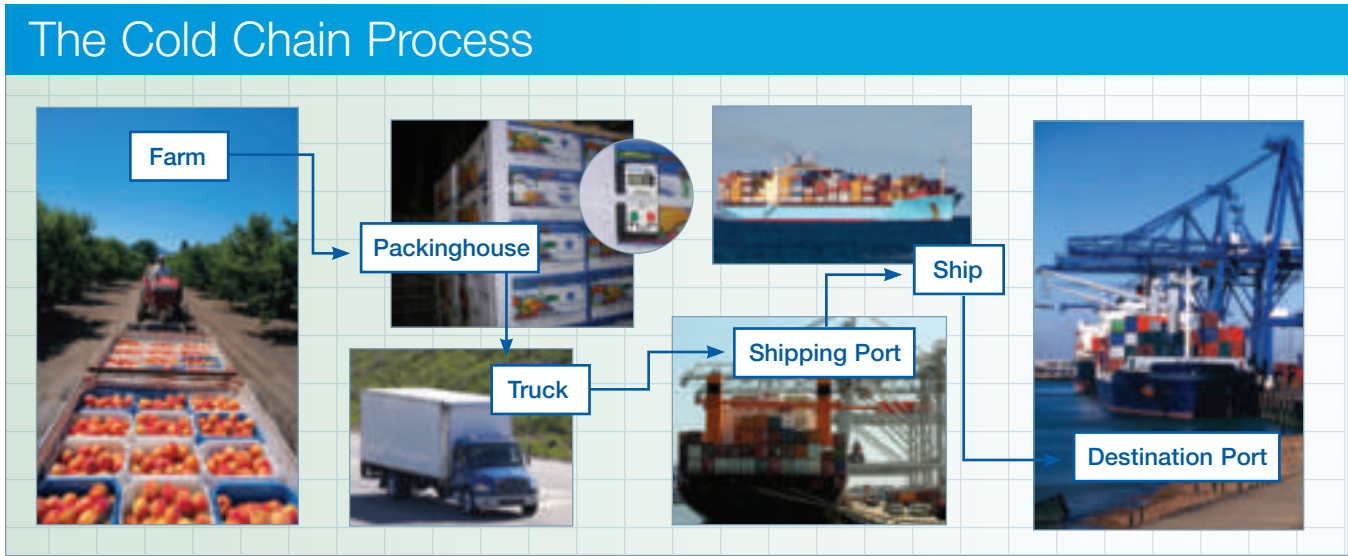
“Our 2005-2006 growing season was eye opening for us.

Sensitech’s Cold Chain Logistical Services gave us the timely reports we needed to self-assess our cold chain management processes. No longer were we forced to wait for end-of-season consolidation reports. We had the ability to work closely with our carrier partners to proactively make process improvements. There is no better way to cut costs than through improvements in efficiency.”

Jose Luis Plos

Director of Operations
David Del Curto S.A.





How it works

Data Collection

TempTale® monitors are placed on pallets bound for export to supported destination locations. Packinghouse personnel mark the boxes and pallets containing the temperature monitoring devices.

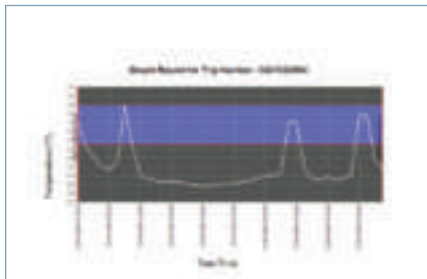
Data Management

Upon arrival at each destination (shipping port and/or destination port), the time and temperature data collected during each supply chain segment is downloaded from the TempTale monitor. If the shipment has not reached its final destination, the TempTale is re-started and re-packed. Sensitech's secure, web-based data repository stores the individual trip data along with other important trip attributes—commodity type,

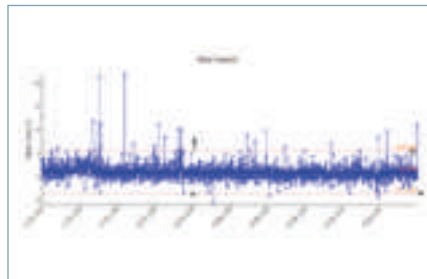
temperature parameters, carrier information. Individual trip records are accessible via the Internet by authorized personnel for transactional-based receiving decisions; record-level sorts and searches are also available.

Data Analysis & Reporting

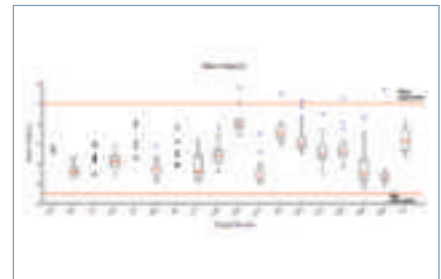
Segment and trip data is aggregated for cold chain analysis. Reports are prepared evaluating performance in multiple ways —by supplier, receiver, carrier, product type or trip. Graphical reports are distributed to pre-determined recipients on a monthly basis. A dedicated Program Manager interprets the information, pinpoints areas of concern, recommends and prioritizes process improvements for your implementation.



Individual Trip Record



Aggregate Mean Temperature for over 2500 Trips



Comparing Variability of All Trips to Single Destination

As the world's leading provider of cold chain visibility solutions, Sensitech enables global leaders in Food and Pharmaceuticals to track and monitor assets across the supply chain to protect the integrity of temperature-sensitive products. Sensitech is a business unit of Carrier Corp., the world's largest provider of heating, air conditioning and refrigeration solutions with operations in 172 countries. Sensitech is an ISO 9001:2000 company and is based in Beverly, Massachusetts, with offices in Amsterdam, Calgary, Melbourne, Redmond and Santiago as well as service and distribution offices around the world. For additional information, call +1-978-927-7033 or visit www.sensitech.com. © 2006. Sensitech Inc. All Rights Reserved. All trademarks and service marks are the property of Sensitech Inc.